



BUITENGEWOON



Casusbespreking Tilburg

Irene Roelands 28-3-2017

Disclosure belangen spreker

(potentiële) belangenverstremgeling	Geen / Zie hieronder
Voor bijeenkomst mogelijk relevante relaties met bedrijven	Bedrijfsnamen
<ul style="list-style-type: none">• Sponsoring of onderzoeksgeld• Honorarium of andere (financiële) vergoeding• Aandeelhouder• Andere relatie, namelijk ...	<ul style="list-style-type: none">••••

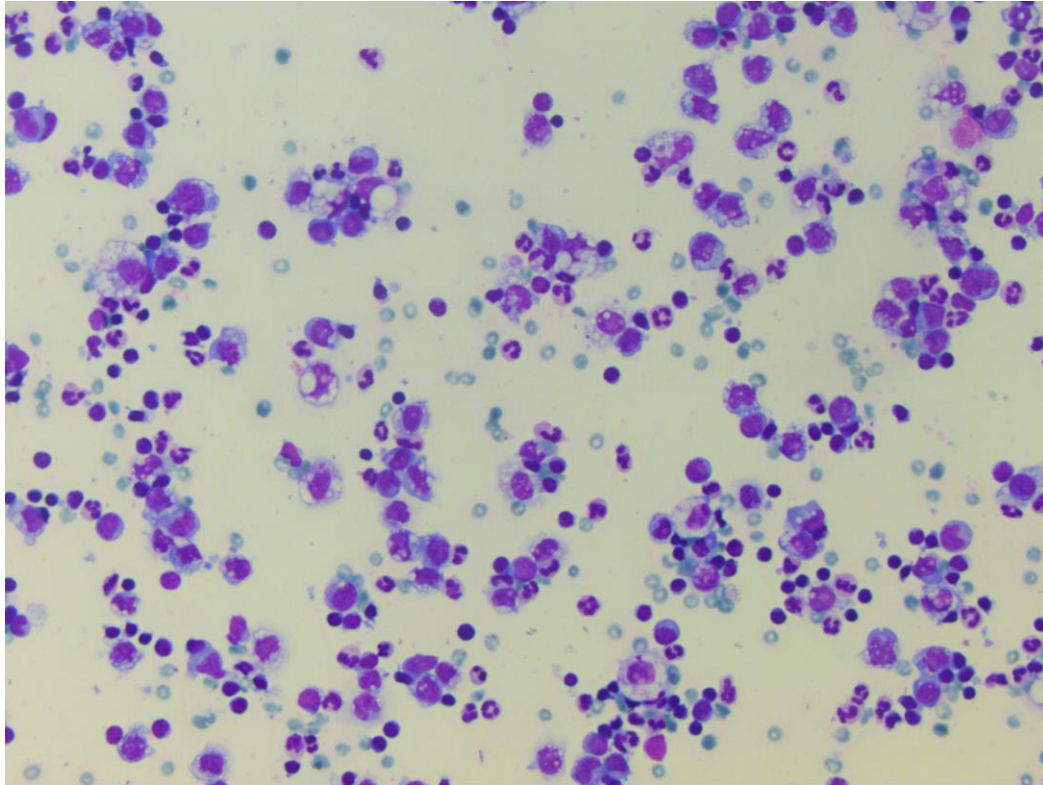


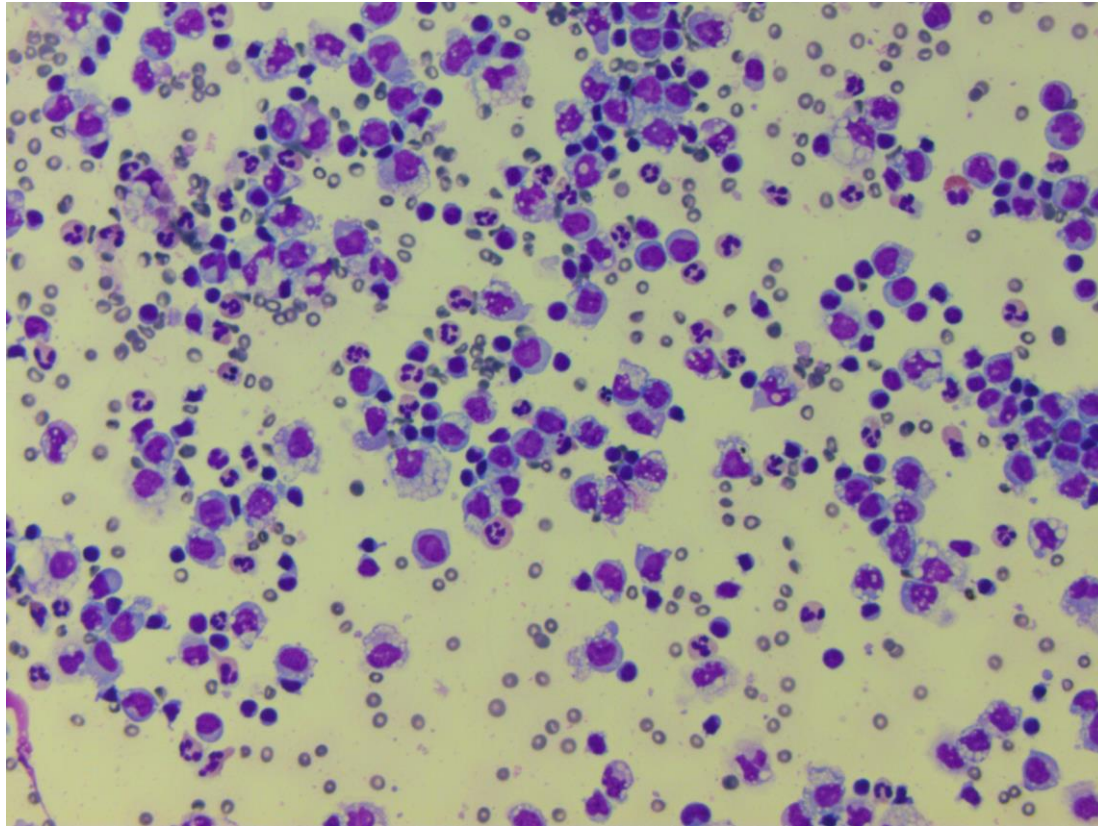
Cytologie en flowcytometrie :

- a. Morfologie is terug te vertalen in dotplots
- b. Dotplots zijn abacadabra voor mij



- Punctie linker mamma , vrouw 26 jaar
- 7 ml geel troebel vocht
- Directe cytospinpreparaten, 2 druppels per cupje





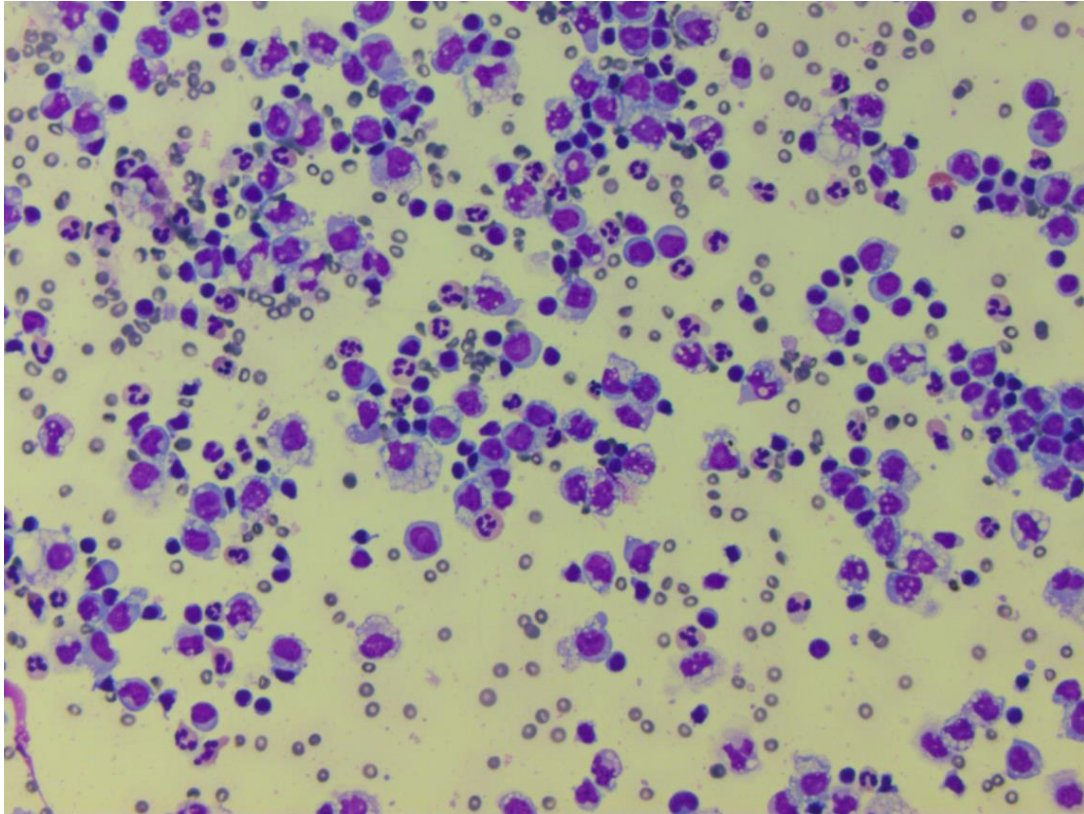


Wat denkt de zaal ?

1. Chronische ontsteking
2. Acute ontsteking
3. Normaal cystebeeld
4. Anders....



Vraagstelling :
Anaplastisch T cel lymfoom?



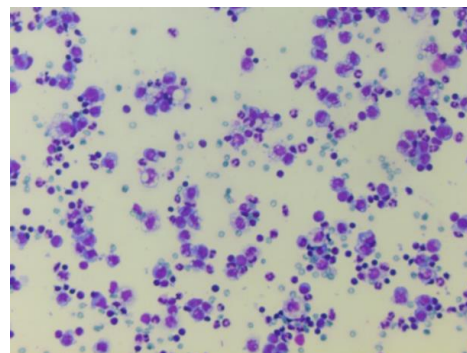
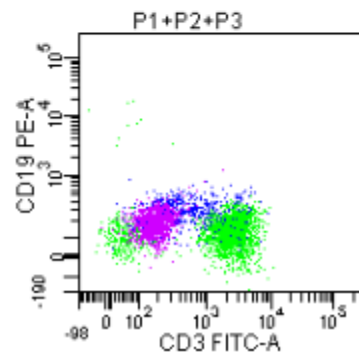
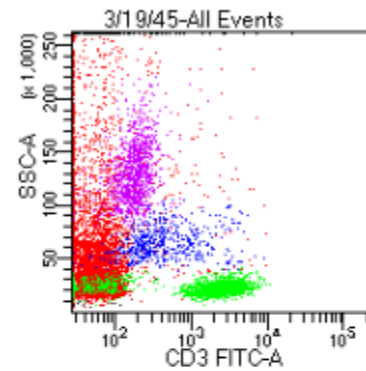
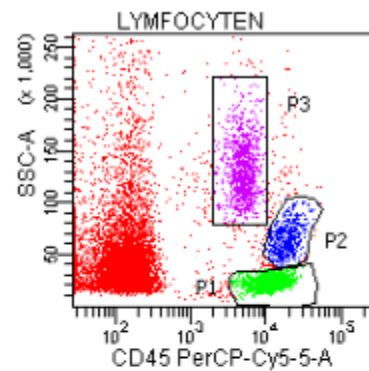
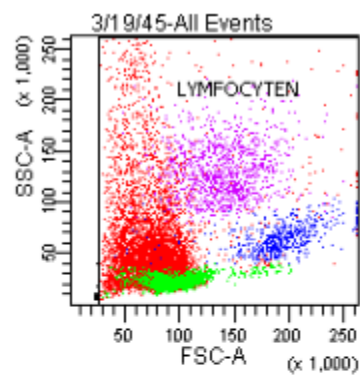


Aanvullend flowcytometrisch onderzoek.

- CD3/CD19/CD45
- CD5/CD10/CD19
- CD2/CD7/CD3

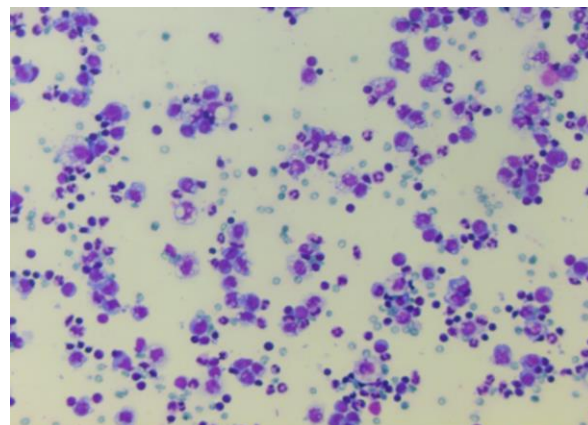
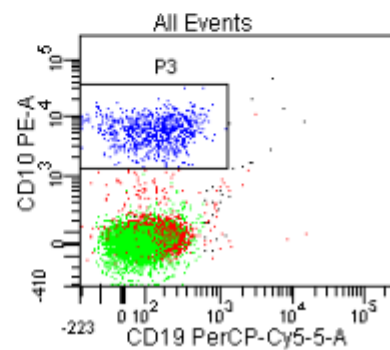
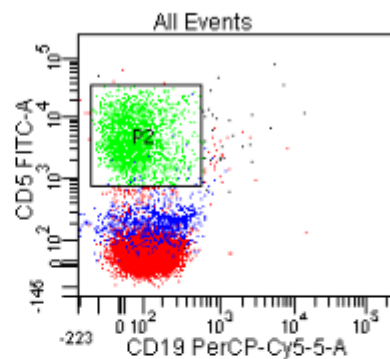
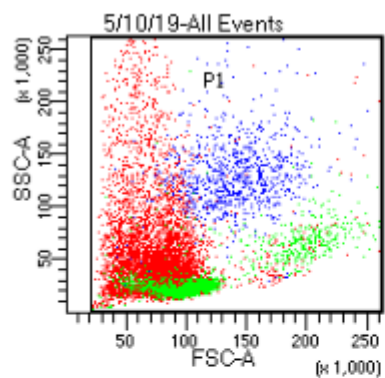


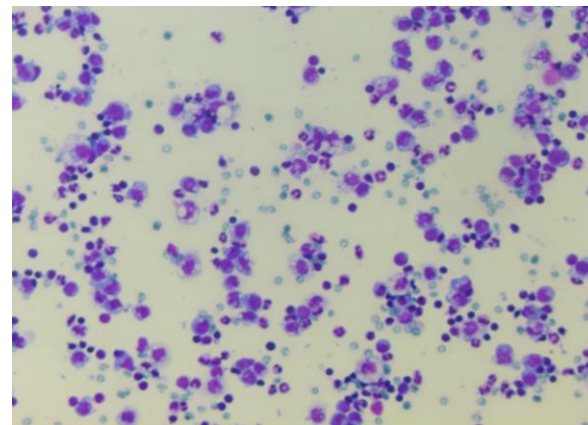
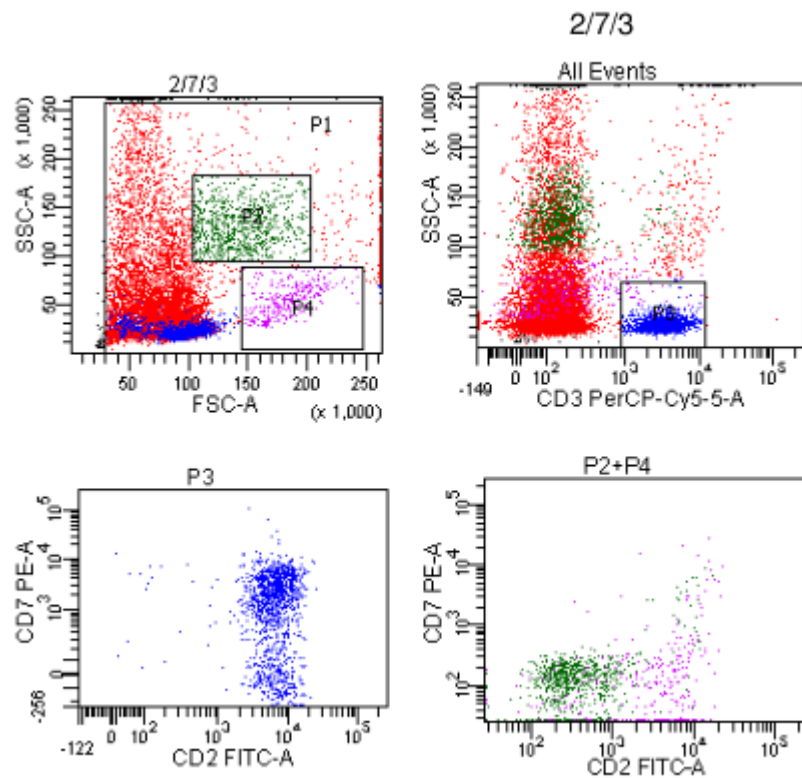
3/19/45

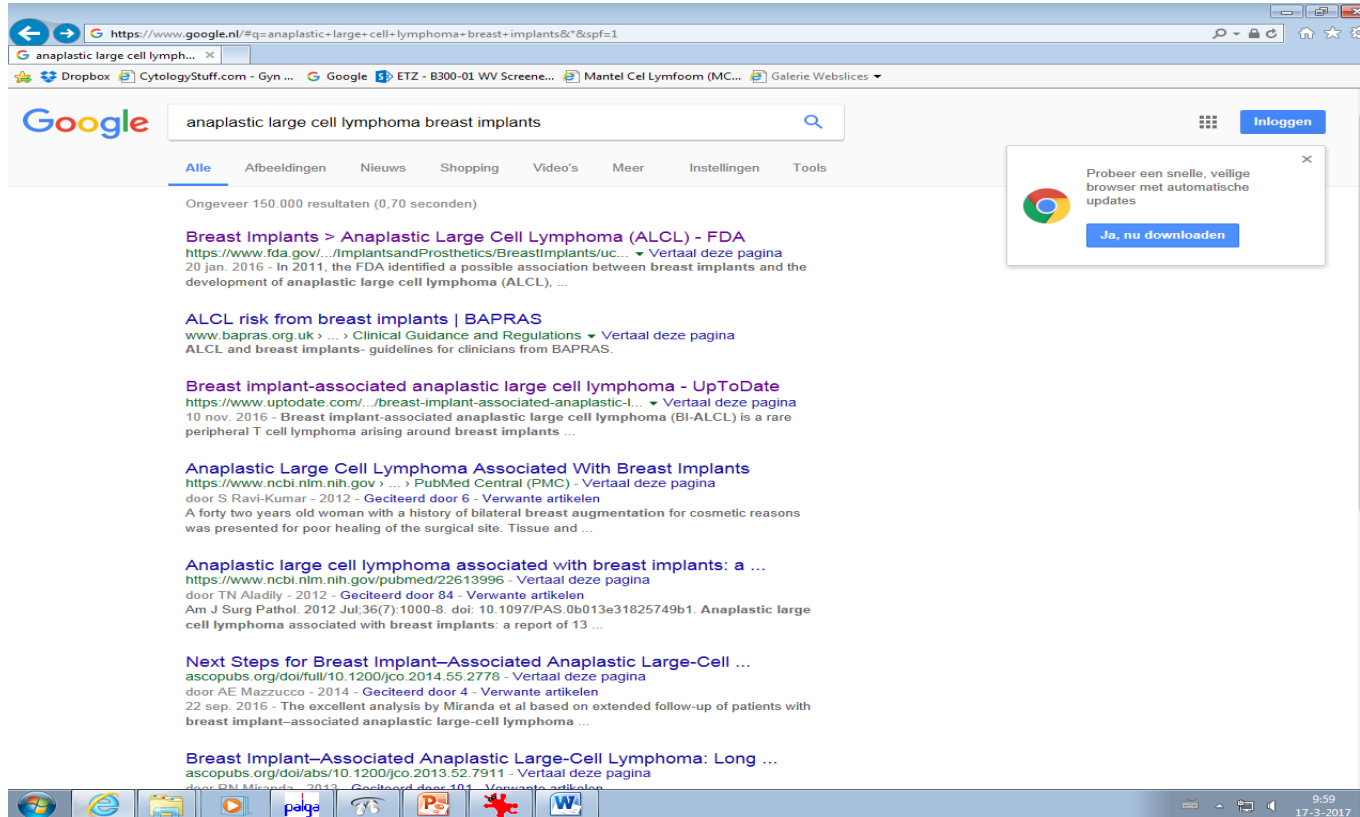




5/10/19







The screenshot shows a Google search results page in a browser window. The search query is "anaplastic large cell lymphoma breast implants". The results are sorted by "Alle" (All). The first result is from the FDA website, titled "Breast Implants > Anaplastic Large Cell Lymphoma (ALCL) - FDA". The second result is from BAPRAS, titled "ALCL risk from breast implants | BAPRAS". The third result is from UpToDate, titled "Breast implant-associated anaplastic large cell lymphoma - UpToDate". The fourth result is from PubMed Central, titled "Anaplastic Large Cell Lymphoma Associated With Breast Implants". The fifth result is from PubMed, titled "Anaplastic large cell lymphoma associated with breast implants: a ...". The sixth result is from ASCO, titled "Next Steps for Breast Implant–Associated Anaplastic Large–Cell ...". The seventh result is from ASCO, titled "Breast Implant–Associated Anaplastic Large–Cell Lymphoma: Long ...".

Browser address bar: https://www.google.nl/#q=anaplastic+large+cell+lymphoma+breast+implants&*&spf=1

Search bar: anaplastic large cell lymphoma breast implants

Navigation: Alle, Afbeeldingen, Nieuws, Shopping, Video's, Meer, Instellingen, Tools

Results: Ongeveer 150.000 resultaten (0,70 seconden)

- Breast Implants > Anaplastic Large Cell Lymphoma (ALCL) - FDA**
<https://www.fda.gov/.../implantsandProsthetics/BreastImplants/uc...> - Vertaal deze pagina
20 jan. 2016 - In 2011, the FDA identified a possible association between breast implants and the development of anaplastic large cell lymphoma (ALCL). ...
- ALCL risk from breast implants | BAPRAS**
www.bapras.org.uk > ... > Clinical Guidance and Regulations - Vertaal deze pagina
ALCL and breast implants- guidelines for clinicians from BAPRAS.
- Breast implant-associated anaplastic large cell lymphoma - UpToDate**
<https://www.uptodate.com/.../breast-implant-associated-anaplastic-l...> - Vertaal deze pagina
10 nov. 2016 - Breast implant-associated anaplastic large cell lymphoma (BI-ALCL) is a rare peripheral T cell lymphoma arising around breast implants ...
- Anaplastic Large Cell Lymphoma Associated With Breast Implants**
<https://www.ncbi.nlm.nih.gov> > ... > PubMed Central (PMC) - Vertaal deze pagina
door S Ravi-Kumar - 2012 - **Geciteerd door 6** - **Verwante artikelen**
A forty two years old woman with a history of bilateral breast augmentation for cosmetic reasons was presented for poor healing of the surgical site. Tissue and ...
- Anaplastic large cell lymphoma associated with breast implants: a ...**
<https://www.ncbi.nlm.nih.gov/pubmed/22613996> - Vertaal deze pagina
door TN Aladily - 2012 - **Geciteerd door 84** - **Verwante artikelen**
Am J Surg Pathol. 2012 Jul;36(7):1000-8. doi: 10.1097/PAS.0b013e31825749b1. Anaplastic large cell lymphoma associated with breast implants: a report of 13 ...
- Next Steps for Breast Implant–Associated Anaplastic Large–Cell ...**
ascopubs.org/doi/full/10.1200/jco.2014.55.2778 - Vertaal deze pagina
door AE Mazzucco - 2014 - **Geciteerd door 4** - **Verwante artikelen**
22 sep. 2016 - The excellent analysis by Miranda et al based on extended follow-up of patients with breast implant–associated anaplastic large-cell lymphoma ...
- Breast Implant–Associated Anaplastic Large–Cell Lymphoma: Long ...**
ascopubs.org/doi/abs/10.1200/jco.2013.52.7911 - Vertaal deze pagina
door BN Mittal et al - 2013 - **Geciteerd door 101** - **Verwante artikelen**

Taskbar: 9:59, 17-3-2017



- Punctie linker mamma , vrouw 26 jaar
- Recente voorgeschiedenis
 - Testisresectie beiderzijds